

The Loess Hills Alliance

Creating a natural balance in Iowa's Loess Hills.

The Loess Hills Alliance

will strive to protect special natural and cultural resources while ensuring the economic viability and private property rights of the region through the creation of a common vision for Iowa's Loess Hills.

For information contact

Loess Hills Alliance
318 E Iowa Ave
Onawa, IA 51040
phone 712-433-4645
email lha@longlines.com
web www.loesshillsalliance.org



**GREY HEADED
CONE FLOWER**



The Loess Hills Alliance was formed in 1998 through legislative action that was requested by concerned citizens for the well-being of the landform in Iowa.

The organization is governed by a 28 member board of directors. Membership is voluntary and participation is encouraged by anyone interested.

The mission of the Loess Hills Alliance as defined by its membership is to "protect the natural and cultural resources of the Loess Hills while ensuring economic viability and private property rights through the creation of a common vision for Iowa's Loess Hills."

We hope tools like this, and others we make available, will be of assistance to those seeking the best options for themselves, their family and their property.

Iowa's Loess Hills have graciously provided resources for generations of farmers, businesses and communities to thrive while engulfing us in their unparalleled, unique splendor. Descendants have learned that these massive, looming hills are indeed delicate and vulnerable. From our forefathers, who lived and worked in the hills, we have been taught good stewardship practices that help us to protect our land and allow us to continue to enjoy its resources.

**GUIDING
PRINCIPLES**

Grassroots and broad based representation

Voluntary Participation

Land use management and stewardship

Land use based regional approach

Communicate, cooperate and coordinate efforts

Consideration of all alternatives

Identify and prioritize areas

Maintain the economic balance of costs and benefits



PASQUE FLOWER



DON WISHART



DON WISHART

**DOWNY YELLOW
PAINTED CUP**

The Loess Hills Alliance works to protect the resources of this unique American treasure. The rugged wind-blown silt deposits provide the perfect terrain for many rare plants and animals.

Participation in the Loess Hills Alliance is voluntary, and legislators felt so strongly that the organization must represent those living and working in the hills that it mandated local make up of the board.

If you live within the hills, you have a voice and a place in the Loess Hills Alliance. If you have an appreciation for and a desire for future generations to reap enjoyment from the landform, you too have a place through committee work in the Loess Hills Alliance.

Information about how you can become involved with the Loess Hills Alliance is on the back page.

And not only will the Loess Hills Alliance welcome donations of your time but it also accept moneterial donations. It is recognized by the Federal Government as a tax exempt 501C3, so if you would like to financially assist the Loess Hills Alliance, send your tax deductible donation to:

Loess Hills Alliance
318 E Iowa Ave
Onawa, IA 51040.

YUCCA

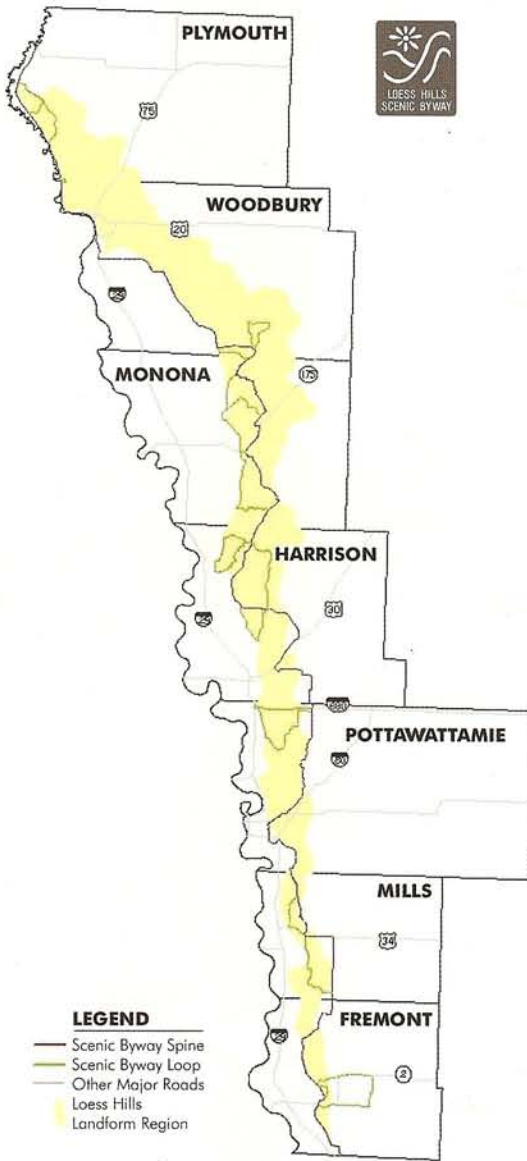


DON POGGENSEE

**TIGER
SALAMANDER**

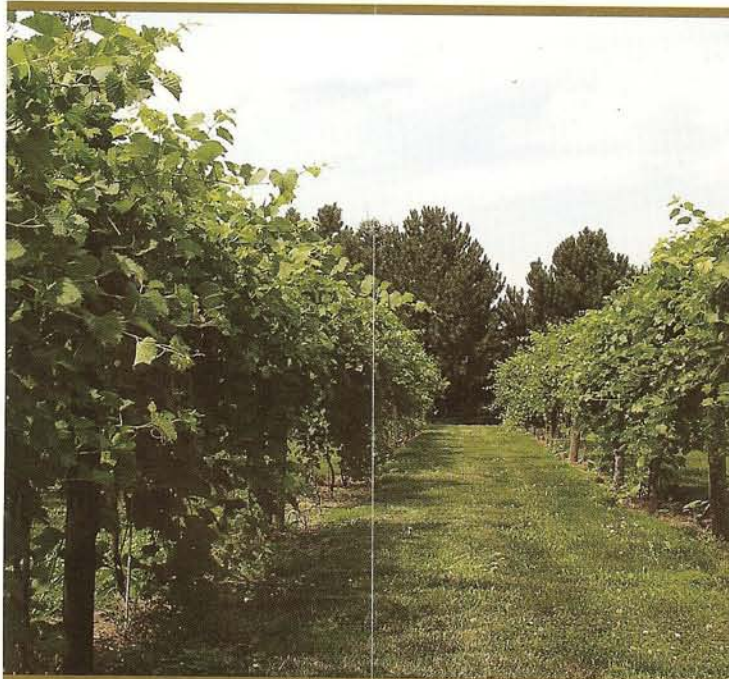


**LOESS HILLS
NATIONAL SCENIC BYWAY
SPINE AND EXCURSION LOOP**



Loess Hills Alliance
318 E Iowa Ave
Onawa, IA 51040
phone 712-433-4645
email lha@longlines.com
web www.loesshillsalliance.org
www.loesshillsnationalscenicbyway.org





Organizational Structure

The 28 member board is comprised of 21 members appointed by county boards of supervisors, (3 residents from each county with one of the 3 being a county supervisor), and 7 additional members (who must be selected from a 22 county area in western Iowa) are appointed by the Loess Hills Development and Conservation Authority.

Economic Development Committee's purpose is to provide a comprehensive plan for economic success of the communities within the Loess Hills which respects the preservation, protection and integrity of the hills. Addressing issues that include:

- Agriculture
- Zoning
- Property Rights
- Tourism
- Cultural Resources
- Land use
- Natural Resources
- Commercial
- Industrial
- Infrastructure
- Transportation
- Housing



DON WISHART

INGEMANN DANISH LUTHERAN CHURCH



DON FOGENSEE



DON FOGENSEE

A RECENT DEVELOPMENT IN ECONOMIC GROWTH WITHIN THE LOESS HILLS

can be seen by the reintroduction of grape vineyards. (photo above left) As the grape and wine industry grows and other economic opportunities blend into the hills so does public awareness about the value and integrity of the Loess Hills, preserving them for generations.

**ORNATE BOX
TURTLE**



DON POGGENSEE



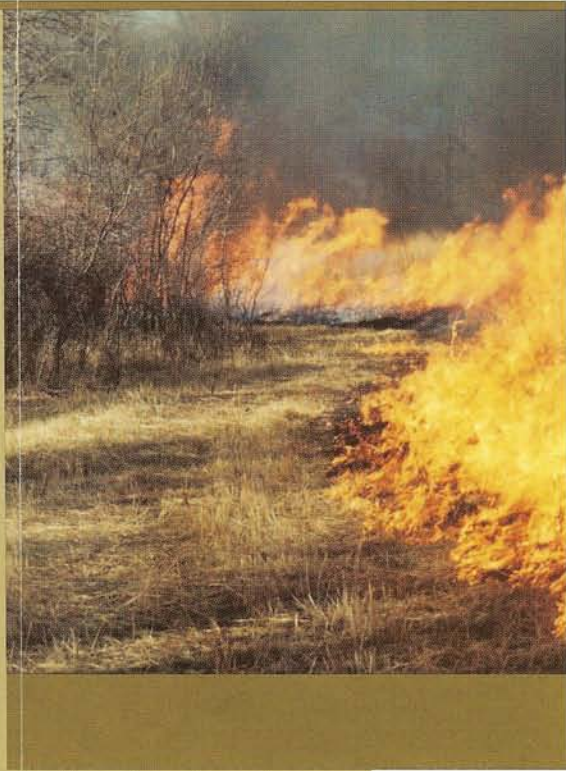
DON POGGENSEE

**THE LOESS HILLS
ALLIANCE AND
CATTLE PRODUCERS
BENEFIT FROM
CONSERVATION**

practices by reviving controlled grazing in the Loess Hills region with grassbanking. Grassbanks restore pastures for grass-based livestock production, as well as improve native prairie biodiversity by suppressing the encroachment of woody vegetation.

Stewardship Committee's purpose is to protect, preserve and enhance for the future of the area's natural and cultural resources through the use of voluntary conservation methods which are respectful of private and public property rights and the local communities. Addressing issues that include:

- Woody Encroachment
- Erosion
- Exotic Invaders
- Natural Areas
- Land Use Education of Resource
- Fill Dirt Removal
- Cultural Resources
- Management Funding
- Re-introduction of Fire
- Empowerment of Landowners to Practice
- Good Land Stewardship



One of the main efforts of this committee is the re-introduction of prescribed fire as an important tool for natural area management. This creates a natural process of disturbance, allowing the prairie to thrive, preventing forest overgrowth on the prairie, and controlling undergrowth within the forest. These controlled burns compensate for the lack of fire on the landscape and the lack of natural grazers no longer grazing on the native grasslands. Historically, as herds of bison and elk migrated through the Loess Hills area they would graze the grasslands. Grazing today is concentrated on smaller sized pastures and is grazed differently than the native grazers.

Protection Committee's purpose is to protect, preserve and enhance the natural and cultural resources of the Loess Hills while assuring economic viability and rights of the public and private property owners. Addressing issues that include:

- Researching Existing Options
- Tax Incentives
- Development of Land Protection Incentives
- Programs and Funding Packages
- Landowner Consultation Services

Executive Committee's purpose is to conduct the everyday business of the Loess Hills Alliance. It is comprised of 7 board elected officials who serve one year terms. The Committee chairs are ex-official members.

Attendance and participation on any committee by any interested individual is always welcomed and encouraged.

To find out how you can become involved, contact:

Loess Hills Alliance
318 E Iowa Ave
Onawa, IA 51040

phone
712-433-4645

email
lha@longlines.com

web
www.loesshillsalliance.org

Summer 2007